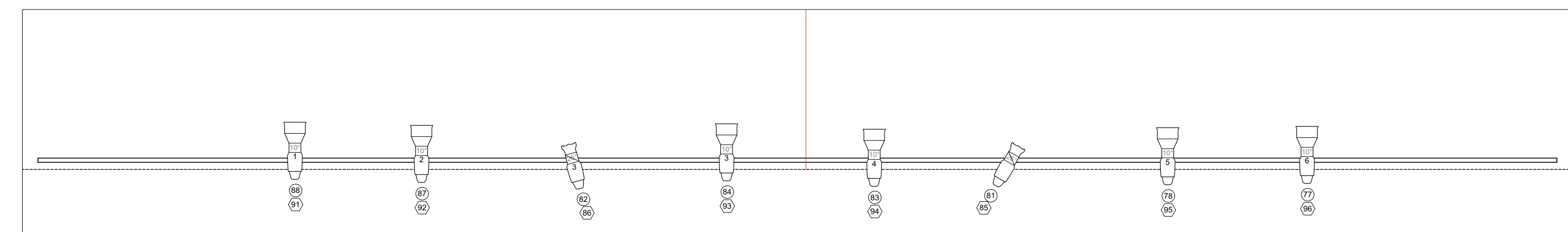
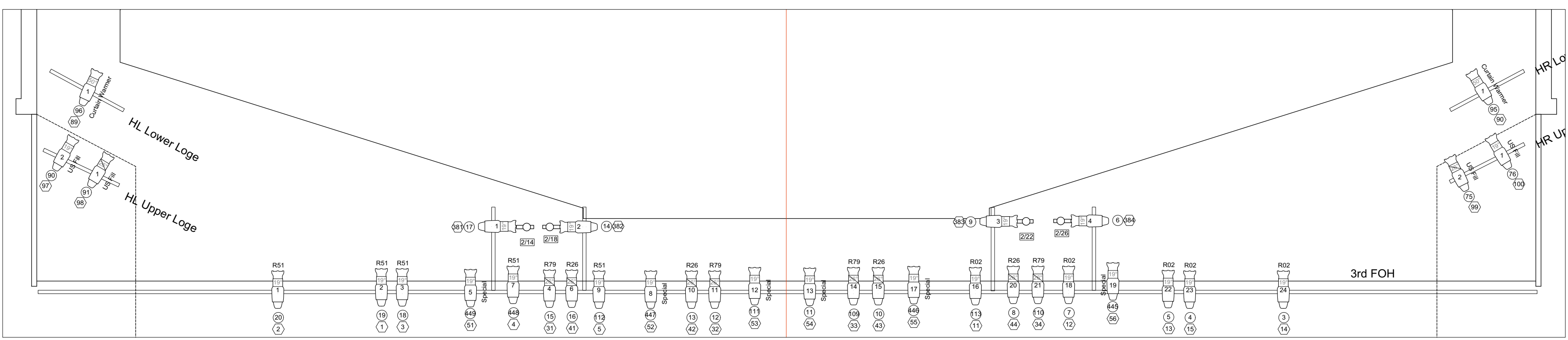
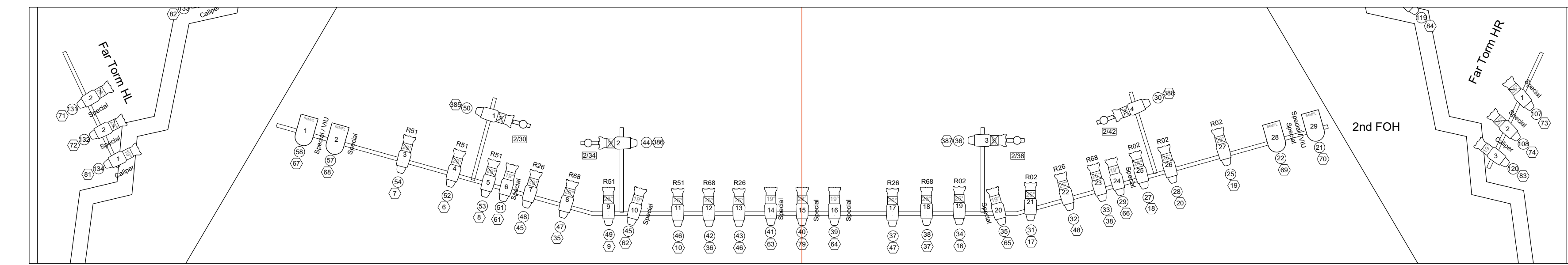
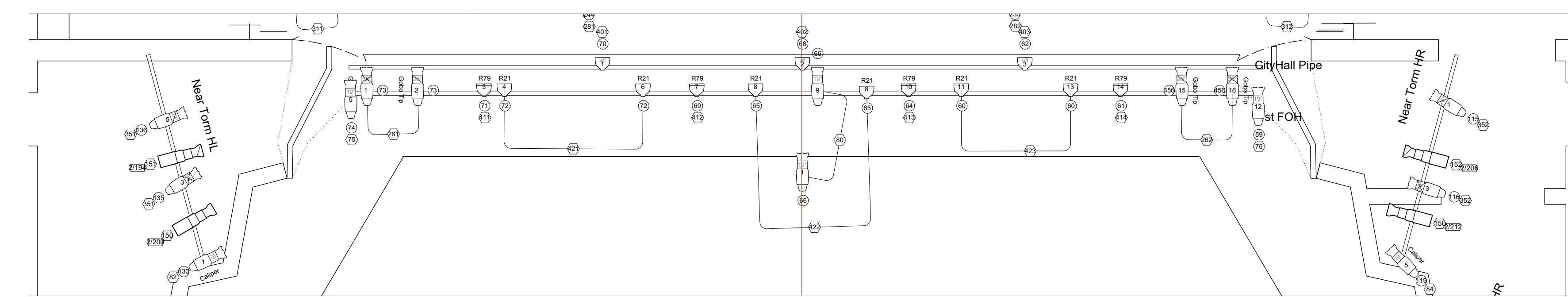
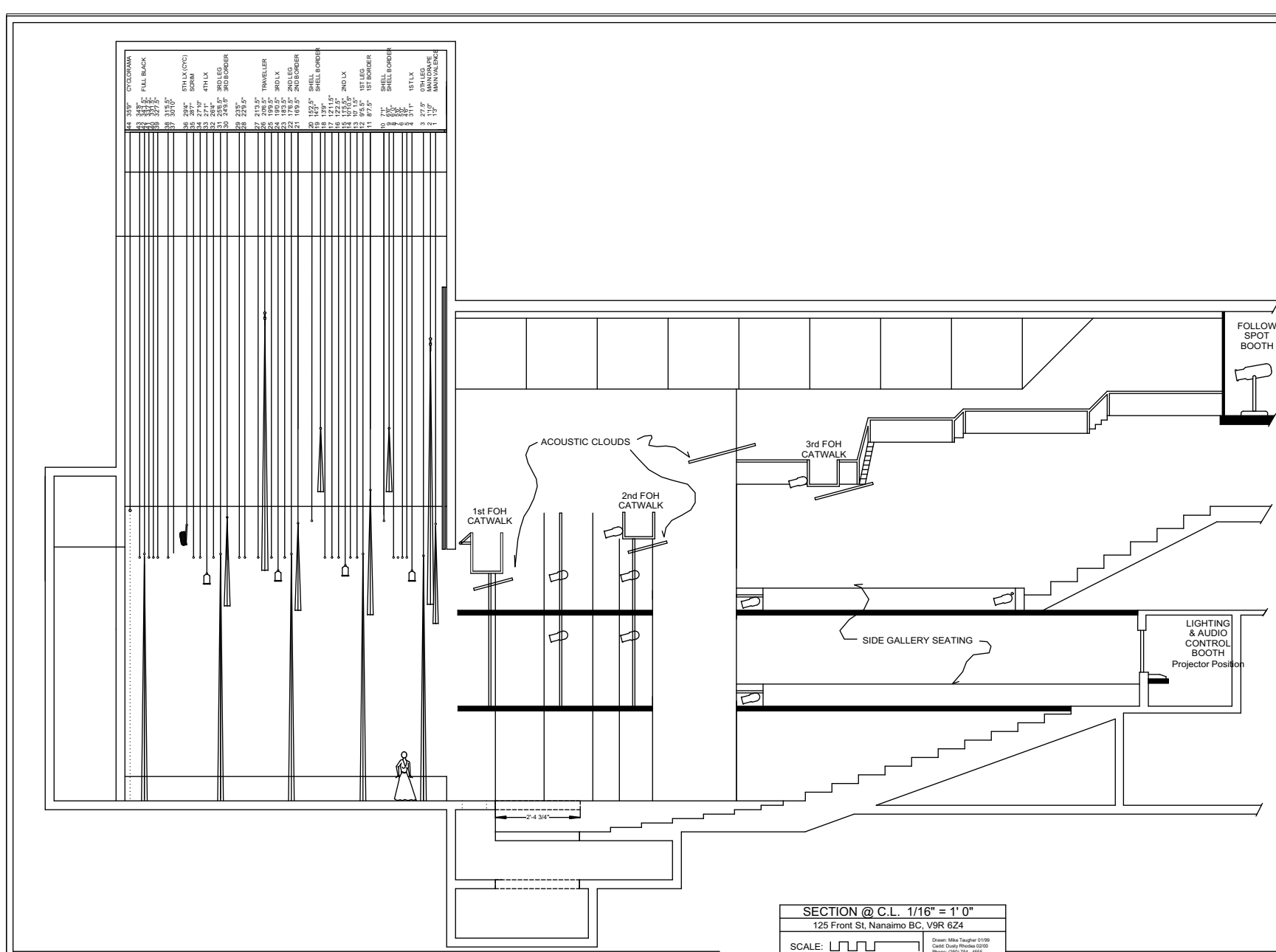
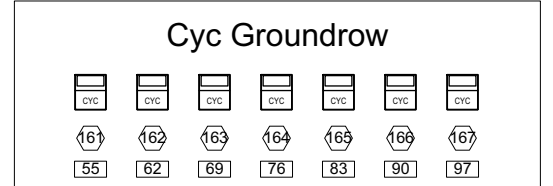
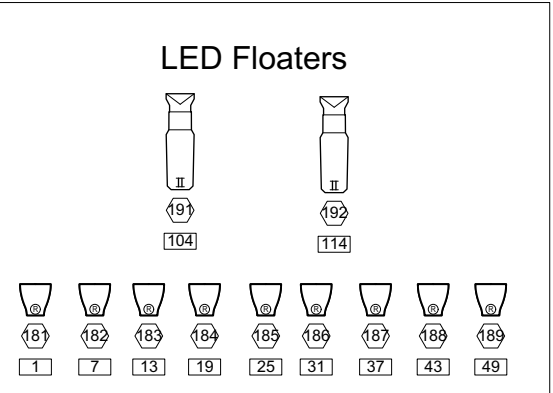
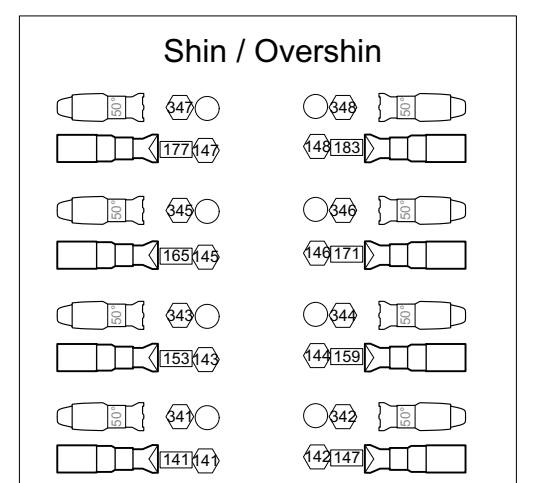


| Instruments | Num In Inventory | Used | Remaining |
|-------------------------------------|------------------|------|-----------|
| CE Source 4 10deg | 6 | 6 | 0 |
| Source 4 10deg | 34 | 32 | 2 |
| Source 4 26deg | 73 | 71 | 2 |
| Source 4 36deg | 44 | 42 | 2 |
| Source 4 50deg | 24 | 13 | 6 |
| Source 4 PARNet | 30 | 30 | 0 |
| S4 PAR WFL | 48 | 18 | 30 |
| ColorSource Par LED DeepBlue Ed. | 39 | | 9 |
| LED Worklight | 9 | 9 | 0 |
| Ayrton Karf-LT | 6 | 4 | 2 |

| Accessories | Num In Inventory | Used | Remaining |
|------------------|------------------|------|-----------|
| IQ Moving Mirror | 16 | 14 | 2 |

Legend



The Port Theatre
 125 Front St. Nanaimo, BC

Drawn By: Jason Pouliot

Notes: Groundrow stored understairs USR
 Baboom shin/overshins stored USL understairs
 All S4Par and S4ParNELs get Heat Shield to help protect gel
 Scoller Colour String is depicted above.
 Karf-LT 515 and 516 in storage down stairs.